

PRODUCT DATA SHEET

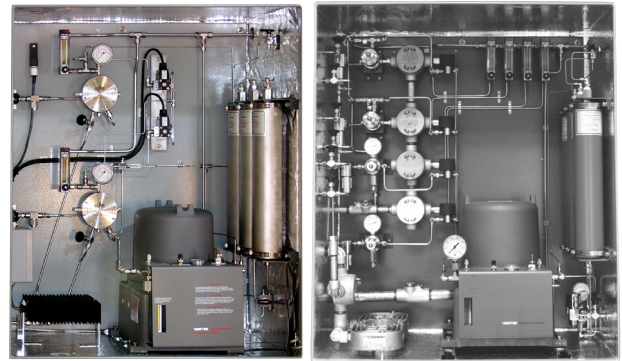
5000 Sample Systems

Engineered to optimize the performance of all AMETEK moisture analyzers

AMETEK's 5000 moisture analyzers come with a series of optional single and multi-point sample systems. These systems are engineered to optimize the performance of AMETEK moisture analyzers.

Each 5000 Sample System includes a floor-mounted painted steel cabinet and the proper complement of sample handling components. Basic components of all systems include: bulkhead fittings, shutoff valves, filters, pressure regulator(s) with gauges, bypass flow meter(s), relief valve(s), and reference gas dryers. Also available are optional accessories for specific application requirements (stainless steel cabinets, clamshell enclosures, membrane gas/liquid separators, fast loop sampling, remote pressure reduction, etc).

The 5000 Sample System, although designed for use with the 5000 Moisture Analyzer, is available for use with other AMETEK moisture analyzer models such as the 2850, 3050-RM, 5800, 5812 and 5830, although non-5000 moisture analyzers are limited to a single sample stream. Separate specification sheets are available that describe the exceptional performance capabilities of these moisture analyzers.



KEY BENEFITS

- Confidence in the accuracy and reliability of the moisture measurement
- Single-supplier accountability
- Reduced cost per measurement point through automatic stream switching
- Lower total installation cost
- Available with a series of optional single and multi-point sample systems

APPLICATIONS

- Designed to optimize monitoring of low moisture levels

KEY MARKETS

- Petrochemical
- Refinery
- Chemical
- Natural gas

To find out more or request a quote visit our website

ametekpi.com

PERFORMANCE SPECIFICATIONS

Number of sample streams	One to four
Multi-stream switching time	Programmable from 2 minutes to many minutes per stream. The optimum dwell time will be determined for your application
Sample wetted parts	Stainless steel
Sample pressure	2.1 to 6.9 bar (30 to 100 psi) or up to 137.9 bar (2000 psi) with optional pressure reducer
Sample flow requirement	1500 sccm
Liquid stream capability	Atmospheric pressure boiling points up to 40°C (104°F)
Utility requirements	A/C power: 100 to 240 V, 50/60 Hz, 190 W for the sampling system, 175W (maximum) for the moisture analyzer, 500 W (maximum) for the optional cabinet heater
Maximum separation between model 5000 moisture analyzer field unit and controller	600 m (2000 ft.)
Ambient temperature	-20 to 50°C (-4 to 122°F) without heat, -40 to 50°C (-40 to 122°F) with optional electric heat. Vortex cooler option available for high-temperature operation
Physical dimensions (W x H x D)	Single-point field unit: 770 x 1530 x 460 mm (30 x 60 x 18 in.) Two, three, four-point field unit: 920 x 1680 x 460 mm (36 x 66 x 18 in.)
Weight	Can vary up to about 350 kg (770 lb.) depending on options
Approvals and certifications	NEC/CEC General Safety Requirements Field Unit: NEC/CEC Class I, Division 1, Groups B, C, D; ATEX II 2 G EEx d IIC T6 (optional: CSA special acceptance)
Controller	NEC/CEC Class I, Division 2, Groups A, B, C, D T4 Optional: Class I, Division 1, Groups B, C, D ATEX II 2 G EEx d IIC T6
Sample system	NEC/CEC Class I, Division 2, Groups B, C, D Optional: NEC/CEC Class I, Division 1, Groups B, C, D T6 to T3ATEX II 2 G EEx de m ia IIC T6 to T3. Russian Gosstandart Pattern Approval. Russian Ex Proof Certification 1ExdIICT6. Complies with all relevant European Directives

New England - ETA Process Instrumentation
119 Foster Street, Bldg #6
Peabody, MA 01960
Tel: (978) 532-1330
www.etapii.com
sales@etapii.com

Upstate NY - Martech Controls
2000 Teall Avenue
Syracuse, NY 13026
Tel: (315) 876-9120
www.martechcontrols.com
sales@martechcontrols.com



© 2018, by AMETEK, Inc. All rights reserved. Printed in the U.S.A. F-0146 Rev 5 (0918)
One of a family of innovative process analyzer solutions from AMETEK Process Instruments. Specifications subject to change without notice.



To find out more or request a quote visit our website

 ametekpi.com