

# PRODUCT DATA SHEET

## AMEVision for 3050 Moisture Analyzers

A multi-analyzer communication and display system including all functions of the 3050 Configurator Software, for up to eight 3050 series analyzers per AMEVision unit

AMEVision allows users to continually monitor the measurement and diagnostic information from up to eight 3050 series moisture analyzers. AMEVision provides real-time moisture measurements, trends data, and details a variety of maintenance and troubleshooting information from the 3050. Users can communicate with AMEVision via Modbus RS485 and Ethernet LAN.

### Intuitive user interface

AMEVision replaces or augments the 3050 Configurator Software. It provides all the same features and capabilities, including span verification and zero span calibration. Additionally, a user can program the 3050 remotely or adjust any parameter.

### Installation and data access flexibility

With a 4.2" video graphics array (VGA) display, AMEVision displays all necessary information to monitor the performance of the 3050 analyzers. Users can mount AMEVision in a convenient, easily accessible location to monitor the 3050 series analyzer. A USB port allows users to extract data or upload new configuration files directly to AMEVision.

### Plug and play

The 3050 series analyzer can be preconfigured at the factory to directly communicate with AMEVision, eliminating the time and effort to set-up the analyzer. A preconfigured unit will have the "AMEVision Ready" designator (pictured below) on its label.

**AMEVISION** Ready

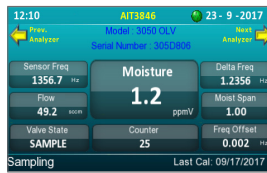


## KEY BENEFITS

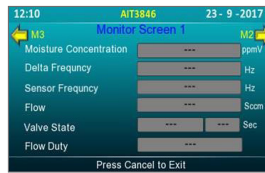
- Compatible with models:
  - 3050-OLV
  - 3050-SLR
  - 3050-DO
  - 3050-TE
- Connect up to eight analyzers on one unit
- Trend history
- Automatic data capture and logging
- Calibration history
- Alarm history



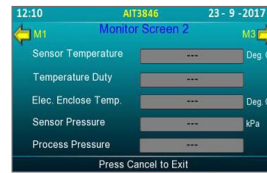
Main Screen-Single Analyzer



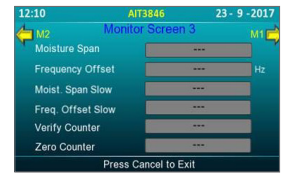
Main Screen - Multiple Analyzers



Monitor Screen 1



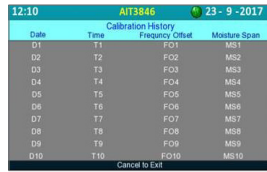
Monitor Screen 2



Monitor Screen 3



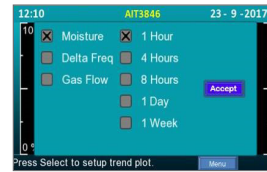
Transfer Data Screen



Calibration History



Alarm History



Trend Data

## PERFORMANCE SPECIFICATIONS

|                               |  |
|-------------------------------|--|
| <b>Display</b>                | 4.2" color 1/4W VGA graphical user interface password protected  |
| <b>Keypad</b>                 | 18 key membrane  |
| <b>Input</b>                  | Two wire Modbus RTU (19200 Baud Rate, Even Parity, 1 Stop Bit) from analyzer<br>Host capable of up to eight analyzers                        |
| <b>Digital outputs</b>        | Two or four wire Modbus RTU<br>TCP/IP Ethernet with embedded web server (RJ45 connection)<br>USB port for data collection or software update |
| <b>Functionality</b>          | 3050 configurator software   |
| <b>Environment</b>            | Ambient temperatures from -25 to +60°C   |
| <b>Power requirements</b>     | Nominal 115-230 VAC ±10%, 47-63 Hz, 75 VA max  |
| <b>System compliance</b>      | EMC directive 2004/108/EC low voltage directive 73/23/EEC<br>Two hazardous area configurations: NEC/CEC Class I, Division 2 and ATEX Zone 2  |
| <b>Dimensions (W x H x D)</b> | 228.8 x 304.8 x 152.4 mm (9 x 12 x 6 in.)  |
| <b>Weight</b>                 | 4.54 kg (10 lbs.)  |
| <b>Enclosure</b>              | NEMA 4   |

New England - ETA Process Instrumentation  
119 Foster Street, Bldg #6  
Peabody, MA 01960  
Tel: (978) 532-1330  
www.etapii.com  
sales@etapii.com

Upstate NY - Martech Controls  
2000 Teall Avenue  
Syracuse, NY 13026  
Tel: (315) 876-9120  
www.martechcontrols.com  
sales@martechcontrols.com



© 2018, by AMETEK, Inc. All rights reserved. Printed in the U.S.A. F-0551 (0818)  
One of a family of innovative process analyzer solutions from AMETEK Process Instruments. Specifications subject to change without notice.



To find out more or request a quote visit our website

ametekpi.com