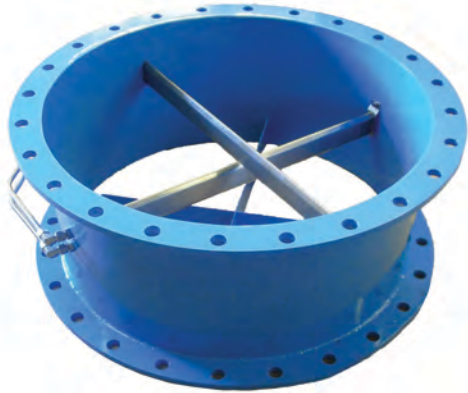


ACCURATE AIR FLOW MEASUREMENT WITH SIMPLE INSTALLATION



Eastern Instruments' DSV for both Round and Rectangular ducts, is a pre-assembled, bolt-in assembly that contains an array of air flow measurement pitots for accurate air flow measurement. The DSV can be installed in either new duct work or retrofitted into your existing duct work and is perfect for any application where accurate air flow measurement and extremely easy, bolt-in installation is required.

Carbon Steel MOC

- CS Flanged Spool Section
- Easy Installation in Any Duct
- For Both "Clean" and "Dirty" Air
- Pitots can be Aluminum or SS
- Customizable Flange Pattern
- Width of all DSV sizes is only 12"
- Integral Straightening Vanes that Reduce Cyclonic Flow
- Can be Used With Nearly Any DP or Multivariable Transmitter

[Click For More Info](#)

Stainless Steel MOC

- SS Flanged Spool Section
- Easy Installation in Any Duct
- For Both "Clean" and "Dirty" Air
- Pitots can be Aluminum or SS
- Customizable Flange Pattern
- Width of all DSV sizes is only 12"
- Perfect for High Temperature Applications
- Great for Corrosive Air/Gas Streams
- Integral Straightening Vanes that Reduce Cyclonic Flow
- Can be Used With Nearly Any DP or Multivariable Transmitter

SHORTER LEAD TIMES. BETTER ACCURACY.

System Requirements: DSV - CS

- **Duct Configuration:** Round Duct
- **Duct Size:** 6" to 36" Diameter
- **MOC:** Carbon Steel/Anodized Aluminum
- **Duct Pressure:** -6 to 6 PSI (-41.4 to 41.4 kPa)
- **Temperature:** -40 to 700 F (-40 to 371 C)
- **Medium:** Clean or Particulate-Laden Air

System Requirements: DSV - SS

- **Duct Configuration:** Round Duct
- **Duct Size:** 6" to 36" Diameter
- **MOC:** Stainless Steel/Anodized Aluminum
- **Duct Pressure:** -6 to 6 PSI (-41.4 to 41.4 kPa)
- **Temperature:** -40 to 900 F (-40 to 482 C)
- **Medium:** Clean or Particulate-Laden Air